

# Surfaces

Zahner Surfaces reflect decades of material innovation. Our expertise in metals, chemistry, and climatic impacts has led to a collection of unique, distinctive and authentic metal patinas that provide a dynamic alternative to paint and other commodity finishes.

As stewards of the built environment, all Zahner patina processes occur in our award-winning, EPA compliant facility. Zahner is dedicated to maintaining minimal impact on habitats and ensuring the health and safety of employees as well as the community at large.



## Angel Hair® Stainless Steel [↗](#)

Zahner's Angel Hair is our patented process etching process producing a fine, non-directional grain for a smooth, uniform architectural surface.



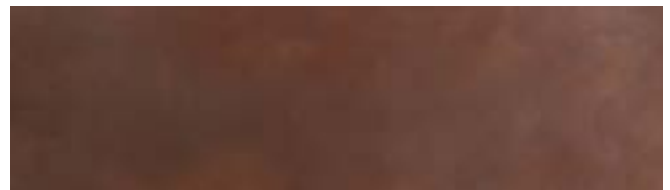
## Fuscara™ Blackened Stainless Steel [↗](#)

A blackened stainless steel delivers a sleek, modern look through deep charcoal tones on a durable, corrosion-resistant metal.



## GB-60™ Stainless Steel [↗](#)

GB-60 is Zahner's non-directional mechanical finish that diffuses the natural reflectivity of metals by introducing very fine dimples, creating a satin glow.



## Solanum™ Steel [↗](#)

Zahner's pre-weathered steel surface delivers rich, resonant red and umber tones using a controlled, proprietary process.



## Spectura™ Steel [↗](#) *interior only*

A color-bending crystalline layer on steel adds a vibrant, shifting colors that vary as the angle of view or illumination changes.



## Oscura™ Blackened Steel [↗](#) *interior only*

A rich, blackened steel patina with a unique, mottled aesthetic designed for interior applications.



### Dirty Penny™ Copper [↗](#)

Dirty Penny Copper features iridescent light and dark tones ranging from blues to greens and reds. The oxidized surface layer acts as a protecting barrier over time.



### Star Blue™ Copper [↗](#)

Star Blue Copper is a premium surface with a stunning aged aesthetic, replicating centuries of natural copper weathering.



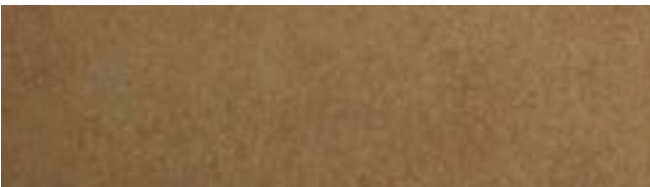
### Hunter™ Zinc [↗](#)

Hunter Zinc is a variegated, matte, zinc with organic panel-to-panel variation suitable for both contemporary and historic looks.



### Baroque™ Zinc [↗](#)

Baroque Zinc matures beautifully, developing a rich umber tone over time, adding warmth and character while protecting the surface.



### Roano™ Zinc [↗](#)

Designed to age gracefully like vintage wine or tanned leather, Roano Zinc offers a stable surface that improves over time, darkening into a rich umber tone.