

Surfaces

Zahner Surfaces reflect decades of metallurgical innovation. Our expertise in chemical compounds and climatic impacts has led to superior patinated finishes that outperform paint and other alternatives. Besides adding artistry, our processes provide a protective barrier for the underlying metals.

As stewards of the built environment, all Zahner material processes occur in our award-winning, EPA compliant facility. Zahner is dedicated to maintaining minimal impact on habitats and ensuring the health and safety of employees as well as the community at large.



Angel Hair[®] Stainless Steel [↗](#)

Zahner's Angel Hair is our patented process etching process producing a fine, non-directional grain for a smooth, uniform architectural surface.



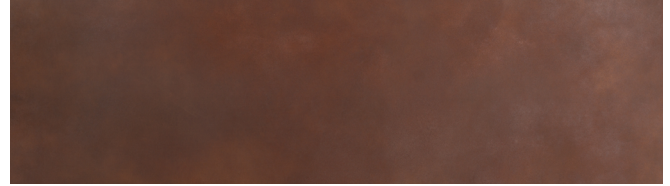
Fuscara[™] Blackened Stainless Steel [↗](#)

Fuscara Stainless Steel offers a sleek, modern look through deep charcoal tones and a durable, corrosion-resistant surface.



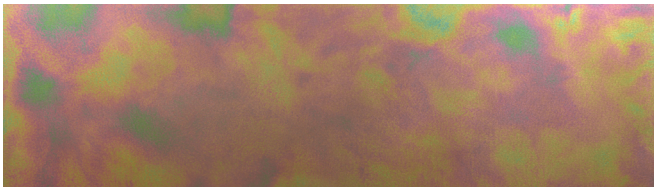
GB-60[™] Stainless Steel [↗](#)

GB-60 is Zahner's non-directional mechanical finish that diffuses the natural reflectivity of metals by introducing very fine dimples, creating a satin glow.



Solanum[™] Steel [↗](#)

Zahner's pre-oxidized weathering steel surface delivers rich, resonant red and umber tones through an accelerated natural weathering process.



Spectura[™] Steel [↗](#)

A color-bending crystalline layer on steel adds a vibrant, shifting colors that vary as the angle of view or the angle of illumination changes.



Oscura[™] Blackened Steel [↗](#)

Zahner's pre-oxidized weathering steel surface delivers rich, resonant red and umber tones through an accelerated natural weathering process.



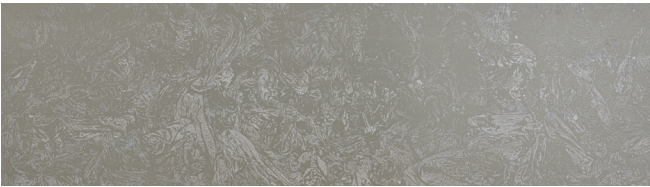
Dirty Penny™ Copper [↗](#)

Dirty Penny Copper features iridescent light and dark tones ranging from blues to greens and reds. The oxidized surface layer acts as a protecting barrier over time.



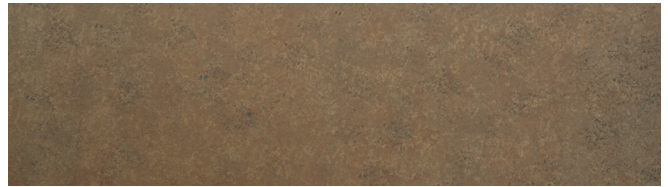
Star Blue™ Copper [↗](#)

Star Blue Copper is a premium surface with a stunning aged aesthetic, replicating centuries of natural copper weathering.



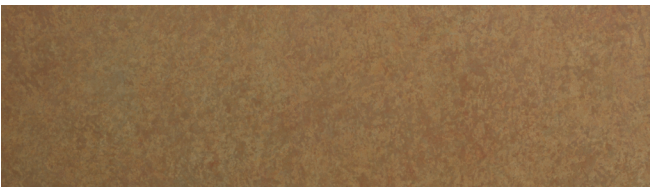
Hunter™ Zinc [↗](#)

Hunter Zinc is a variegated, matte, zinc with organic panel-to-panel variation suitable for both contemporary and historic looks.



Baroque™ Zinc [↗](#)

Baroque Zinc matures beautifully, developing a rich umber tone over time, adding warmth and character while protecting the surface.



Roano™ Zinc [↗](#)

Designed to age gracefully like vintage wine or tanned leather, Roano Zinc offers a stable surface that improves over time, darkening into a rich umber tone.

Sheet Materials

CUSTOMER INFORMATION

First Name _____

Last Name _____

Email _____

Company _____

ORDER INFORMATION

Indicate the desired flat sheet quantities below.

*Quick Ship Orders Limited to Stock Availability.



= Quick Ship

2s = 2-sided finish

316 = Alloy Preference

Angel Hair® Stainless Steel

| | 4' x 10' | 5' x 10' | |
|-------|----------|----------|---------------|
| | 316 2s | 316 2s | SPECIAL ORDER |
| 11 ga | _____ | _____ | |
| 12 ga | _____ | _____ | |
| 14 ga | | _____ | |
| 16 ga | _____ | _____ | |
| 18 ga | | _____ | |
| 20 ga | _____ | _____ | |
| 22 ga | | _____ | |

Fuscara™ Blackened Stainless Steel

| | 4' x 10' | 5' x 10' | |
|-------|----------|----------|---------------|
| | 316 | 316 | SPECIAL ORDER |
| 11 ga | _____ | _____ | |
| 12 ga | _____ | _____ | |
| 14 ga | | _____ | |
| 16 ga | _____ | _____ | |
| 18 ga | | _____ | |
| 20 ga | _____ | _____ | |
| 22 ga | | _____ | |

GB-60™ Stainless Steel

| | 4' x 10' | 5' x 10' | |
|-------|----------|----------|---------------|
| | 316 2s | 316 2s | SPECIAL ORDER |
| 3/16" | _____ | _____ | |
| 11 ga | _____ | _____ | |
| 12 ga | _____ | _____ | |
| 14 ga | _____ | _____ | |
| 16 ga | _____ | _____ | |
| 18 ga | _____ | _____ | |

Solanum™ Steel

| | 4' x 10' | 5' x 10' | |
|-------|----------|----------|---------------|
| | 2s | 2s | SPECIAL ORDER |
| 3/16" | _____ | _____ | |
| 11 ga | _____ | | |
| 12 ga | _____ | _____ | |
| 14 ga | | _____ | |
| 18 ga | | _____ | |

Spectura™ Steel

| | 4' x 10' | 5' x 10' | |
|-------|----------|----------|---------------|
| 11 ga | _____ | _____ | SPECIAL ORDER |
| 12 ga | _____ | _____ | |
| 14 ga | _____ | _____ | |
| 16 ga | _____ | _____ | |
| 18 ga | | _____ | |
| 20 ga | | _____ | |

Oscura™ Blackened Steel

| | 4' x 10' | 5' x 10' | |
|-------|----------|----------|---------------|
| 11 ga | _____ | _____ | SPECIAL ORDER |
| 12 ga | _____ | _____ | |
| 14 ga | _____ | _____ | |
| 16 ga | _____ | _____ | |
| 18 ga | | _____ | |
| 20 ga | | _____ | |

Sheet Materials

ORDER FORM

ORDER INFORMATION

Indicate the desired flat sheet quantities below.

*Quick Ship Orders Limited to Stock Availability.



= Quick Ship

2s = 2-sided finish

316 = Alloy Preference

Dirty Penny™ Copper

3' x 10'

20 oz



24 oz



32 oz



48 oz



Star Blue™ Copper

3' x 10'

20 oz



24 oz



32 oz



48 oz



Hunter™ Zinc

39.4" x 10'

0.8 mm



Baroque™ Zinc

39.4" x 10'

0.8 mm



Roano™ Zinc

39.4" x 10'

0.8 mm



For general consultation or specific questions on product specifications, please contact your Zahner consultation team at azahner.com/contact