

IMAGEWALL PERFORATED PANEL SYSTEM

PRICING GUIDE

DISCOVER ENDLESS DESIGN POSSIBILITIES WITH IMAGEWALL.

ImageWall perforated metal panel systems give you endless design possibilities whether you are looking to enhance a lobby, refresh an aging exterior, or add character to a parking garage.

ImageWall combines the beauty, strength, and durability of Zahner metals with the ability to bring logos, intricate patterns, and high-resolution images to life.

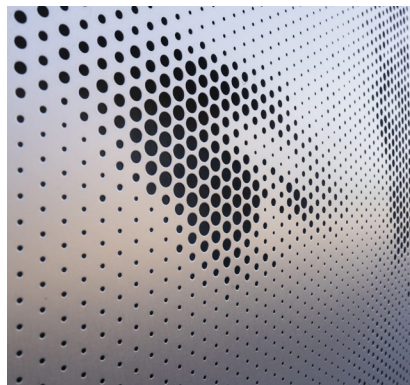
It is available in pre-engineered, adaptable panel systems, tailored to meet a wide variety of needs. Additionally, ImageWall's flexible engineering and fabrication processes enable quick and efficient procurement, production, and shipping to the job site.

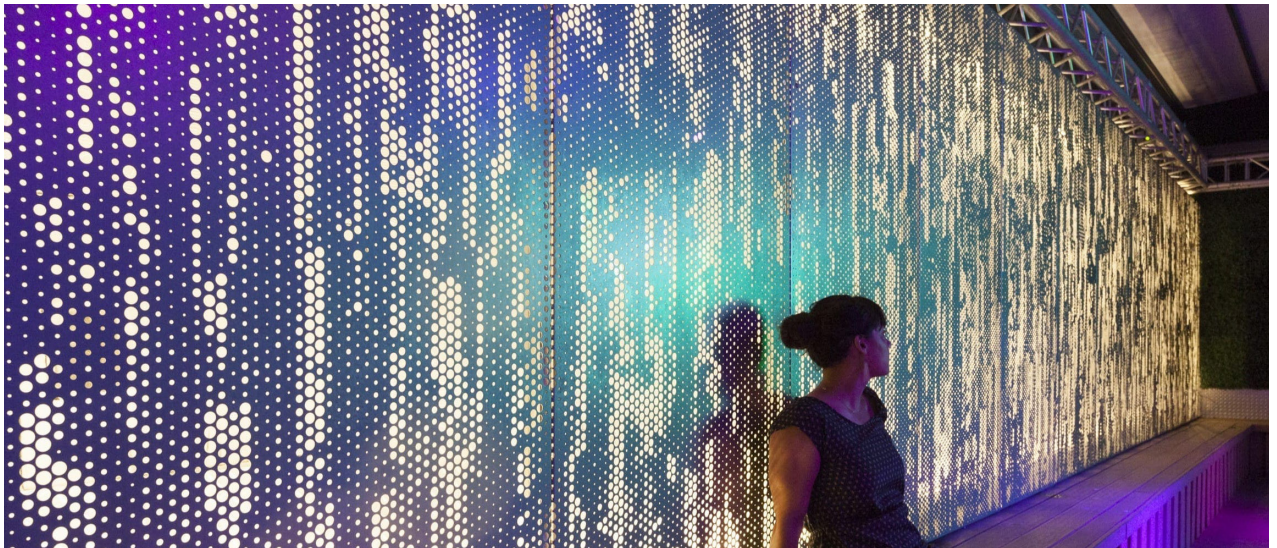
You can upload your graphics now to the [ImageWall Visualizer](#) to simulate what your ImageWall concept could look like. You can also find more information at zahner.com/products/imagewall. Or if you're ready for a quote, visit zahner.com/system-sales.



Project: 1256 Penn Ave.
Location: Minneapolis, MN
Material: Angel Hair® Stainless Steel
Alloy: 304 Alloy
Gauge: 14 Ga
Panel Size: 48" x 108" (20)
System: Drop & Lock with Hat Channel
Surface Area: 720 sqft
Estimate: **\$80/sqft** *(Before taxes and installation. Estimate includes engineered shop drawings and delivery to job site.)*

[GET A QUOTE](#)

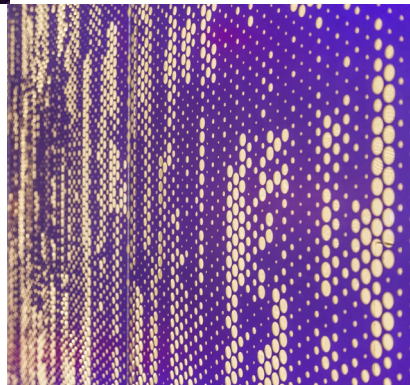




Project: Summit Rooftop Lounge
Location: Austin, TX
Material: Angel Hair® Stainless Steel
Alloy: 304 Alloy
Gauge: 14 Ga
Panel Size: 48" x 108"
System: Drop & Lock with Mullion & Anchor
Surface Area: 432 sqft
Estimate: **\$95/sqft** *(Before taxes and installation. Estimate includes engineered shop drawings and delivery to job site. Lighting is not included.)*



[GET A QUOTE](#)

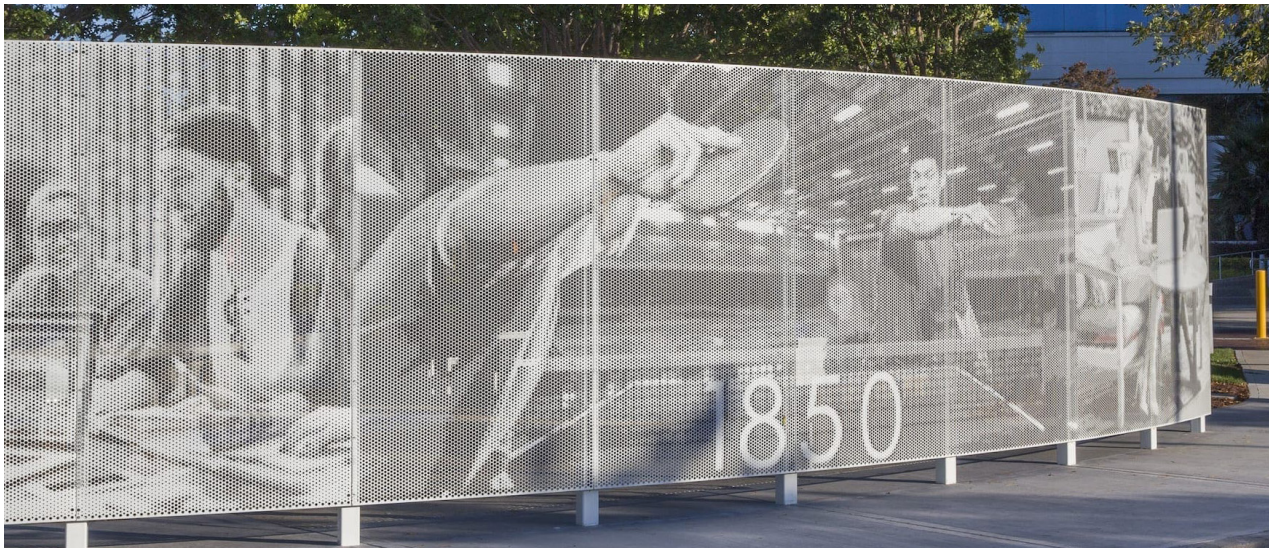




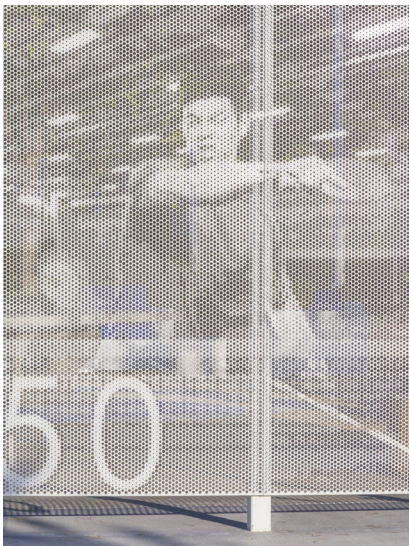
Project: 350 Sparks
Location: Ottawa, Ontario
Material: Aluminum
Finish: Champagne Anodized
Gauge: .125"
Panel Size: 48" x 72"
System: Drop & Lock with Hat Channel
Surface Area: 1,563 sqft
Estimate: **\$75/sqft** *(Before taxes and installation. Estimate includes engineered shop drawings and delivery to job site.)*

[GET A QUOTE](#)

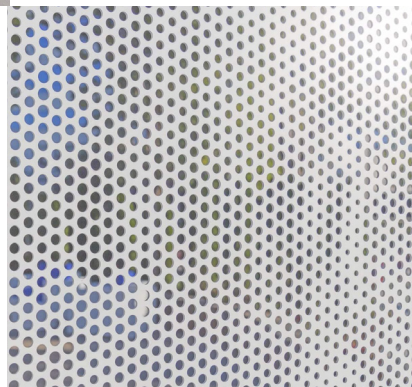


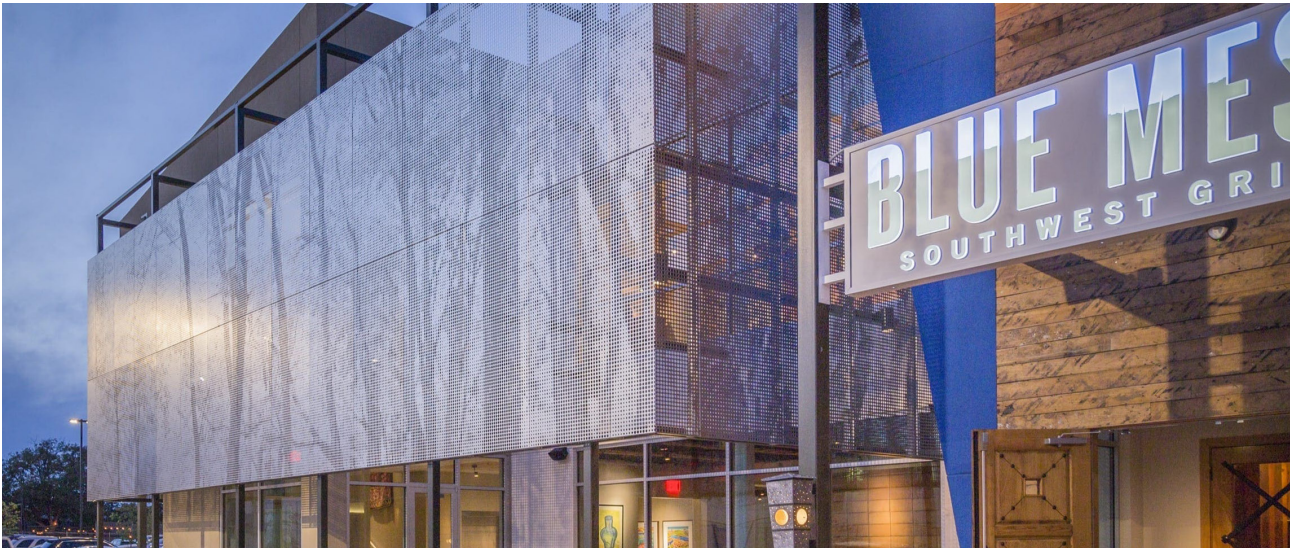


Project: 1850 Gateway
Location: San Mateo, CA
Material: Aluminum
Finish: 2-Coat PVDF (White)
Gauge: .125"
Panel Size: 48" x 96"
System: Double Return-Short Span
Surface Area: 256 sqft
Estimate: **\$110/sqft** (Before taxes and installation. Estimate includes engineered shop drawings and delivery to job site.)



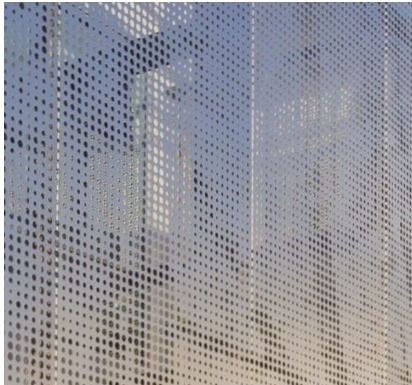
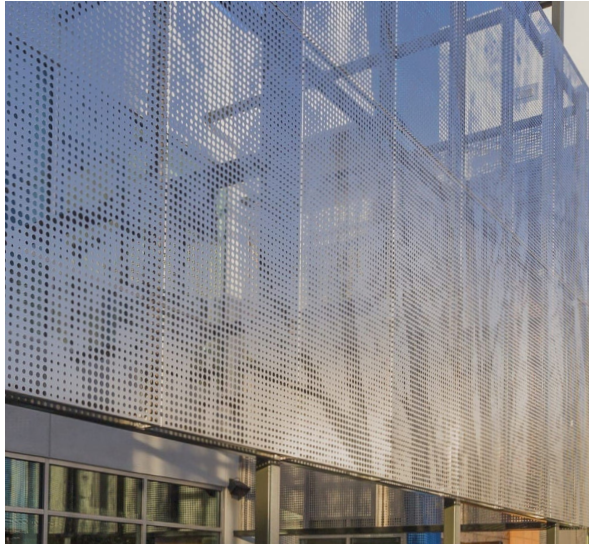
[GET A QUOTE](#)





Project: Blue Mesa Restaurant
Location: Fort Worth, TX
Material: Angel Hair® Stainless Steel
Alloy: 304 Alloy
Gauge: 14 Ga
Panel Size: 40" x 84"
System: Drop & Lock with Mullion & Anchor
Surface Area: 1,120 sqft
Estimate: **\$85/sqft** (Before taxes and installation. Estimate includes engineered shop drawings and delivery to job site.)

[GET A QUOTE](#)



ZAHNER®

1400 East 9th Street | Kansas City, Missouri 64106 USA

sales@zahner.com | +1 816.423.8354

All pricing information contained in this guide is provided for general reference only and does not constitute a formal proposal, quotation, or agreement. Prices are subject to change at any time without notice due to fluctuations in commodity markets, material availability, fabrication complexity, and other factors. Final pricing, terms, and conditions will be provided in a formal proposal and purchase agreement issued by Zahner. For an official quote or binding agreement, please contact Zahner directly.