

ZAHNER FLAT SHEETS

PRICING GUIDE

ADD EXTRAORDINARY IMPACT TO YOUR PROJECT WITH ZAHNER FLAT SHEETS.

Zahner Flat Sheets reflect decades of metallurgical innovation and artisan craftsmanship. Our expertise in chemical compounds and climatic impacts has led to authentic patinated finishes that outperform paint and other alternatives.

Our proprietary processes yield natural, organic shifts in tone and texture from sheet to sheet. This controlled variation—a signature of our work—creates a depth that simply cannot be replicated by machines. Besides adding artistry, these processes also provide a protective barrier for the underlying metals.

As stewards of the built environment, all Zahner material processes occur in our award-winning, EPA compliant facility. Zahner is dedicated to maintaining minimal impact on habitats and ensuring the health and safety of employees as well as the community at large.

This pricing guide provides example configurations of Zahner Flat Sheets as well as the costs associated with each. Think of it as a design-to-cost road map that helps you quickly benchmark your design vision.

To learn more about Flat Sheets, visit us at zahner.com/products/surface-sheets/. If you have a question, don't hesitate to reach out at zahner.com/product-inquiries/#contact.



Oscura™ Blackened Steel



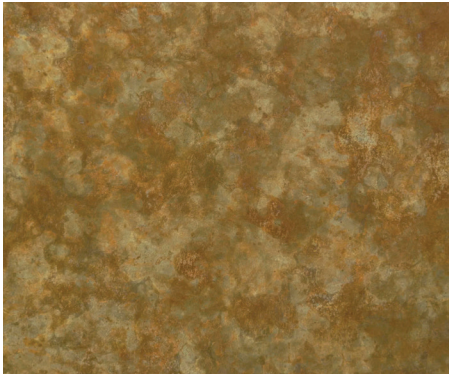
Solanum™ Weathering Steel



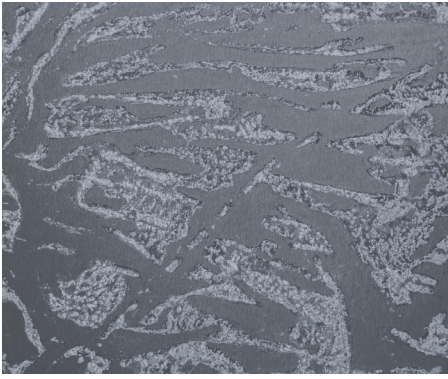
Fusca™ Blackened Stainless Steel



Angel Hair® Stainless Steel



Roano™ Zinc



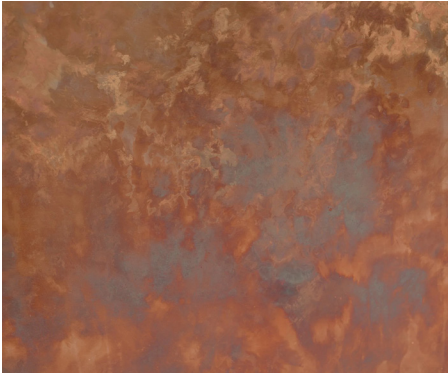
Hunter™ Zinc



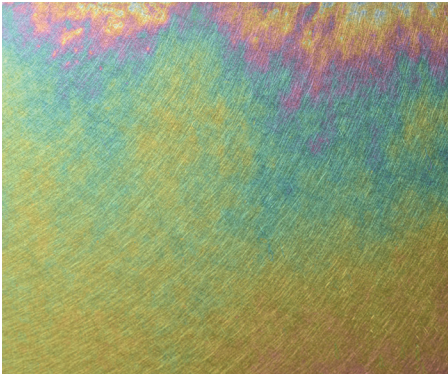
Baroque™ Zinc



Star Blue™ Copper



Dirty Penny™ Copper



Spectura™ Steel

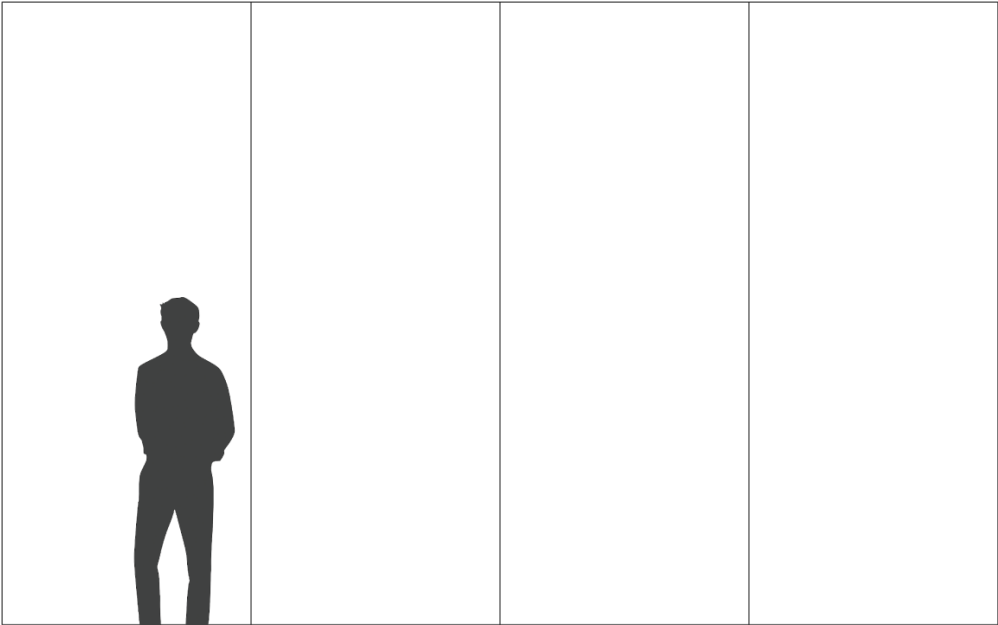


GB-60™ Stainless Steel

There are 11 different finishes available with Zahner Flat Sheets.



Angel Hair® Stainless Steel on the Fisher Center at Bard College.



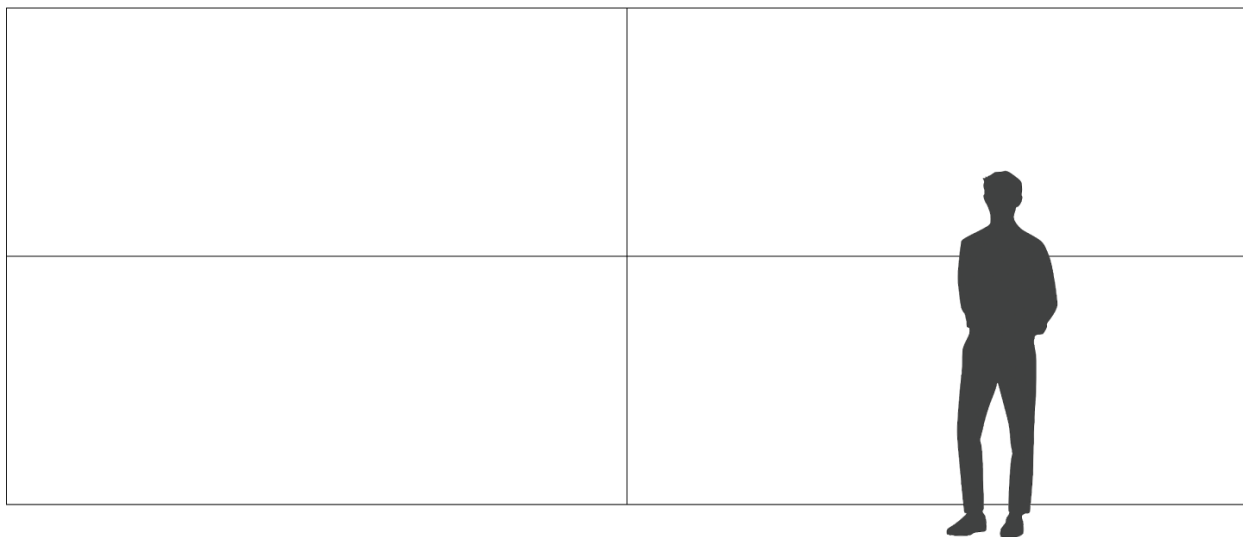
- THICKNESS**
- 14 gauge (~.078")
 - 18 gauge (~.05")
 - 22 gauge (~.03")

Product: 4' x 10' Flat Sheets
Metal: Angel Hair® Stainless Steel
Thickness: 22 gauge (~.03")
Dimensions: 160 sq ft
Estimate: **\$12/sq ft** (before taxes, shipping, and installation)

Sheet thickness and count are the primary drivers of pricing.



Solanum™ Weathering Steel in the Guggenheim Hermitage Museum.



Product: 4' x 10' Flat Sheets
 Metal: Solanum™ Weathering Steel
 Thickness: 18 gauge (~.048")
 Dimensions: 160 sq ft
 Estimate: **\$15/sq ft** *(before taxes, shipping, and installation)*



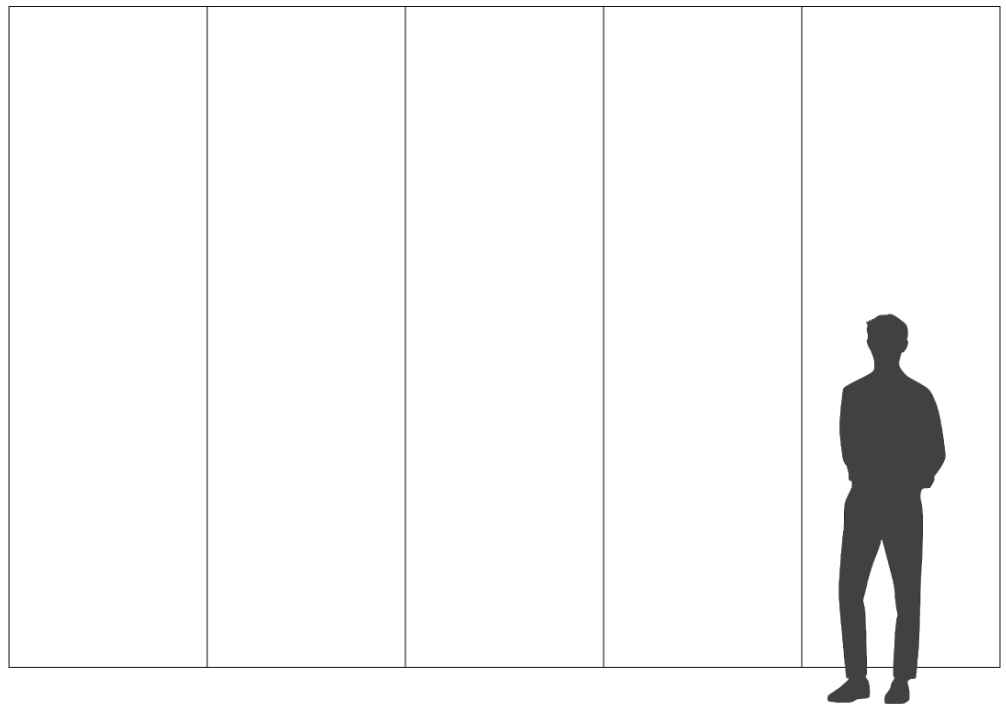
THICKNESS

14 gauge (~.075")
 18 gauge (~.048")

Sheet thickness and count are the primary drivers of pricing.



Dirty Penny™ Copper in the AECOM Cleveland Office



THICKNESS

- 32 ounce (~.043")
- 24 ounce (~.032")
- 20 ounce (~.027")

Product: 3' x 10' Flat Sheets
 Metal: Dirty Penny™ Copper
 Thickness: 20 ounce (~.027")
 Dimensions: 150 sq ft
 Estimate: **\$38/sq ft** (before taxes, shipping, and installation)

Sheet thickness and count are the primary drivers of pricing.



1400 East 9th Street | Kansas City, Missouri 64106 USA

productsales@azahner.com | +1 816.423.8354

All pricing information contained in this guide is provided for general reference only and does not constitute a formal proposal, quotation, or agreement. Prices are subject to change at any time without notice due to fluctuations in commodity markets, material availability, fabrication complexity, and other factors. Final pricing, terms, and conditions will be provided in a formal proposal and purchase agreement issued by Zahner. For an official quote or binding agreement, please contact Zahner directly.